



ERP SYSTEM



miniMAX

Solution Canada Inc

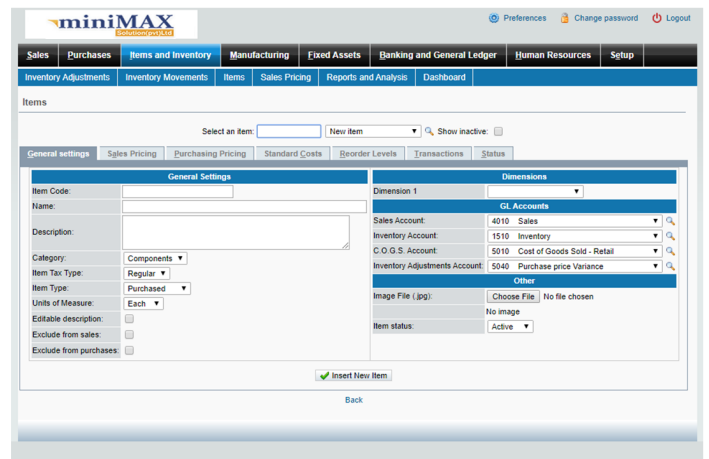
Minimum Price Maximum Solutions

INTRODUCTION

Enterprise Resource Planning (ERP) is business process management software that allows an organization to use a system of integrated applications to manage the business and automate many back office functions related to technology, services and human resources. ERP software typically integrates all facets of an operation including product planning, development, manufacturing, sales and marketing in a single database, application and user interface.

Here are Some Modules:

- * Sales Module
- * Purchase Module
- * Inventory Module
- * Accounting Module
- * HRM Module
- * Manufacturing Module
- * Fixed Assets Module



SALES MODULE

miniMAX ERP is very flexible in the way it can handle sales, from complete integration with a manufacturing process to just issuing invoices.

You can use the complete sales process or just the steps you require depending on your operation. The menu options below are annotated with suggestions as to which Department would use them.

Features:

- * Sales Quotation
- * Sales Order
- * Direct Delivery (Delivery and Sales Order in one step.)
- * Direct Invoice (Sales Invoice, Delivery and Sales Order in one step.)
- * Delivery against Sales Orders (Select Sales Order and dispatch goods. Search outstanding Sales Orders.)
- * Invoice Against Sales Delivery
- * Add and Manage Customers
- * Customer Branches
- * Sales Groups

- * Sales Types
- * Sales Persons
- * Sales Areas
- * Template For Delivery
- * Template For Invoicing
- * Customer Payment
- * Customer Credit Note
- * Allocate Customer Payments or Credit Notes
- * Reports and Analysis



PURCHASE MODULE

- * The normal procedure is first a Purchase Order (PO), then a receivable note (GRN) and then a Supplier Invoice
- * If you do a Direct Supplier Invoice, all these stages will be performed in the background.
- * If you do a Direct GRN, a PO is done in the background. When the Supplier Invoice is received, you use the Supplier Invoice

The Purchasing Account is first debited when delivering (Delivery Note) the Product and the Inventory is credited. The stocks are still in our possession until delivering.

Features:

- * Purchase Order Entry
- * Outstanding Purchase Order Maintenance
- * Direct GRN Entry
- * Direct Purchase Invoice Entry
- * Suppliers
- * Payments to Suppliers
- * Supplier Invoices
- * Supplier Credit Notes
- * Allocate Supplier Payments or Credit Notes
- * Reports and Analysis

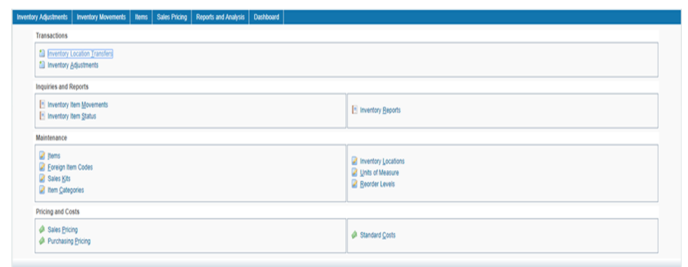


INVENTORY MODULE

Inventory module facilitates processes of maintaining the appropriate level of stock. Stock in the warehouse of the company.

The activities of inventory control involve:

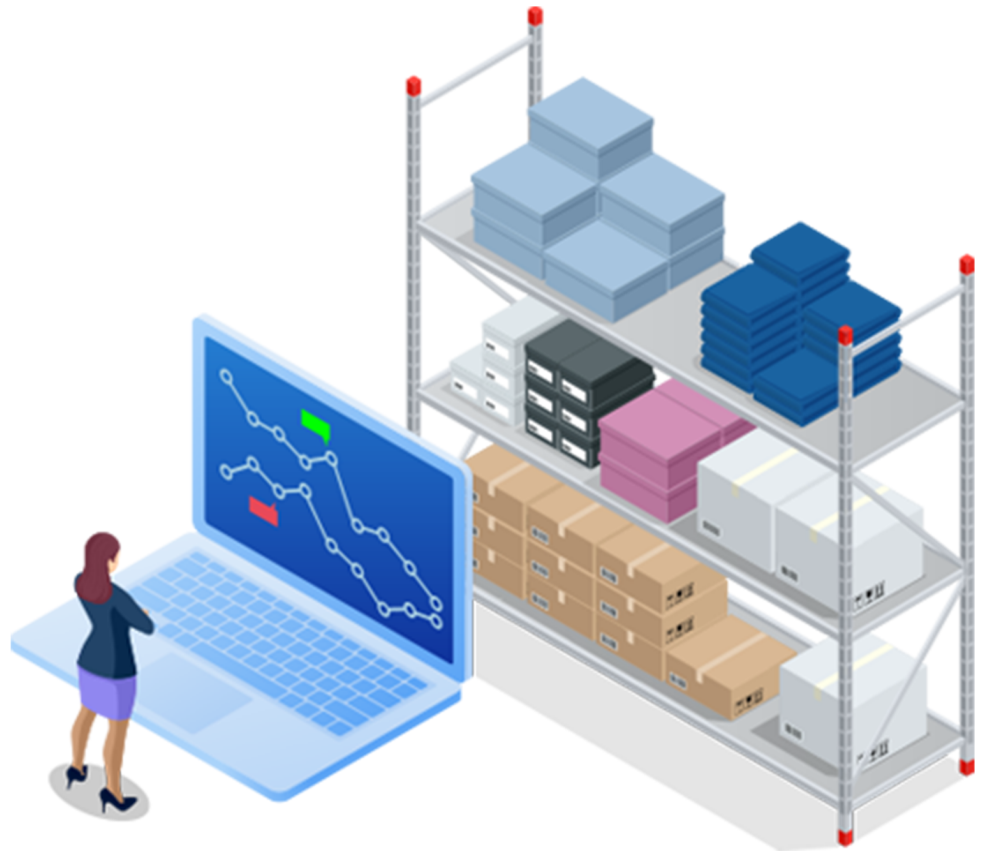
- * Identifying inventory requirements.
- * Setting targets.
- * Providing replenishment techniques and options.
- * Monitoring item usages.
- * Reconciling the inventory balances.
- * Reporting inventory status.





Features:

- * Items
- * Inventory Location Transfers
- * Inventory Adjustments
- * Inventory Item Movements
- * Inventory Item Status
- * Foreign Item Codes
- * Inventory Movement Types
- * Sales Kits
- * Units of Measure
- * Item Categories
- * Inventory Locations
- * Sales Pricing
- * Standard Costs
- * Purchasing Pricing
- * Reports and Analysis

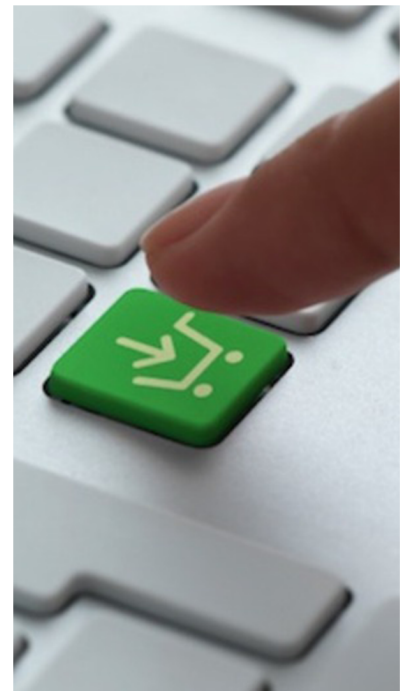


ACCOUNTING MODULE

The accounting module is designed to automate general accounting operations, providing flexibility and utility to both SMBs (small and medium businesses) and to large enterprises with more complex activities.

Features:

- * Payments
- * Deposits
- * Journal Entry
- * Budget Entry
- * Bank Account Transfers
- * Reconcile Bank Account
- * Revenue / Cost Accruals
- * Journal Inquiry
- * Trial Balance
- * GL Inquiry
- * Balance Sheet Drilldown
- * Bank Account Inquiry
- * Profit And Loss Drilldown
- * Tax Inquiry
- * Bank Accounts
- * Quick Entries
- * GL Accounts
- * GL Account Groups
- * GL Account Classes
- * Account Tags
- * Currencies
- * Exchange Rates
- * Revaluation of Currency Accounts
- * Reports and Analysis



HRM MODULE

Human Resources is another widely implemented ERP module. ERP HR module streamlines the management of human resources and human capital.

Features:

- * Employees
- * Departments
- * Overtime Rates
- * Salary Schemes
- * Allowance & Deduction Accounts
- * Allowance & Deduction Rules
- * Salary GL Postings
- * Attendance
- * Pay slip



MANUFACTURING MODULE

Manufacturing is the process by which raw materials are transformed into finished products. The role of the ERP manufacturing module is to complete the inventory management by implementing the operations specific to a streamlined manufacturing process.

Features:

- * Work Order Entry
- * Outstanding Work Orders
- * Bills of Material (BOM)



FIXED ASSETS MODULES

The Fixed Assets module in the ERP solution integrates with Accounts Payable, Inventory Management, and General Ledger allowing for multiple methods of input of assets. Employ different depreciation methods and conventions to track multiple valuations for the same fixed asset.

Features:

- * Fixed Assets Purchase
- * Fixed Assets Location Transfers
- * Fixed Assets Disposal
- * Fixed Assets Sale
- * Process Depreciation
- * Fixed Assets
- * Fixed Assets Locations
- * Fixed Assets Categories
- * Fixed Assets Classes

CONTACT DETAILS

For Free Software Trial



info@minimaxsolution.ca



www.minimaxsolution.ca



+1-450-984-1566



miniMAX

Solution Canada Inc